



Government of West Bengal

OFFICE OF THE CHIEF MEDICAL OFFICER OF HEALTH
& MEMBER SECRETARY, DISTRICT HEALTH & FAMILY WELFARE SAMITY

RAMPURHAT HEALTH DISTRICT

E-mail : cmohrampurhatd@gmail.com

Phone No – 03461-256102

Memo No: - DHFWS/RPH/DQAU/3088

Dated: 11/12/2019

CORRIGENDUM

(Memo No DHFWS/RPH/DQAU/3020 dated 02/12/2019)

The following changes have been made in the Bid – Document entitled “Supply And Installation Of Colour Printed Vinyl Board And Signage For Implementation Of Various Health Programmes Including Sushree (Kayakalp) Programme At Different Place Under Rampurhat Health District”. (For Health Facility Of 8 Blocks Including 16 Phcs)

In corrigendum bearing Memo No DHFWS/RPH/DQAU/3020 dated 02/12/2019 under item Rate BoQ Financial Cover BoQ **Please read** The Folder as Financial Bid shall contain : Base rate per Accounting unit to be quoted price should be exclusive all taxes (like GST...)

1. **Please read** Supply And Installation Of Colour Printed Vinyl Board And Signage For Implementation Of Various Health Programmes Including Sushree (Kayakalp) Programme At Different Place Under Rampurhat Health District.

In place of Supply & Installation of Colour Printed Vinyl Board & signage for implementation of Sushree (Kayakalp) programme at different places under Rampurhat Health District (Page No – 03)

2. **Please read** the price quoted by the bidder shall include all charges for providing all materials. The quoted price should be exclusive all taxes (like GST...)

In place of the price quoted by the bidder shall include all charges for providing all materials. The quoted price should be including of all charges GST, freight, packing forwarding and insurance. (Page No – 15)

3. **Please read** Sq. Ft.; in place of Nos in column no. text/ unit in BOQ sl No. 1 to 12 (item 1 to 12) Rate should be based on unit Sq.Ft.

4. **Please read** “update specification” in place of “ Details of signage to be made is given below”
(Page No – 14)

Others contents of the said notice will remain unchanged.

Memo No: - DHFWS/RPH/DQAU/3088/L(11)

Copy forwarded for information & necessary action:-

1. The District Magistrate, Birbhum.
2. The DADHS Hospital Administration Branch, Swasthya Bhaban, Kol-91
3. The ADM(G), Birbhum.
4. The Dy. CMOH – III, Rampurhat Health District.
5. The ACOH, Rampurhat Health District.
6. The Account Officer, Rampurhat Health District.
7. The Engineering Section, Rampurhat Health District.
8. The DPC/DAM, Rampurhat Health District.
9. The AM, Rampurhat Health District.
10. Quality Assurance Cell, Rampurhat Health District.
11. Office Copy

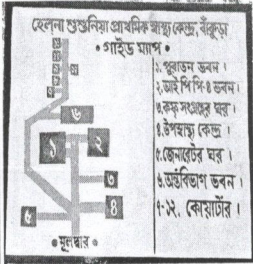
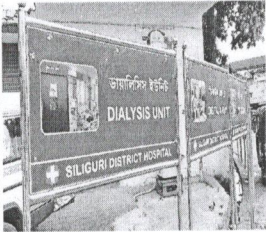
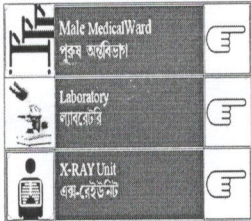
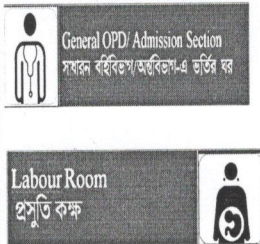
Chief Medical Officer of Health
Rampurhat Health District

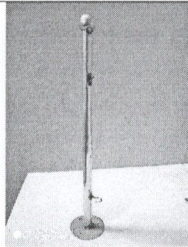
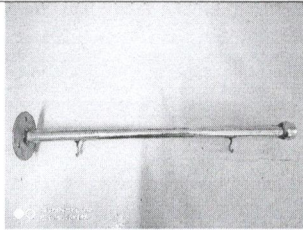
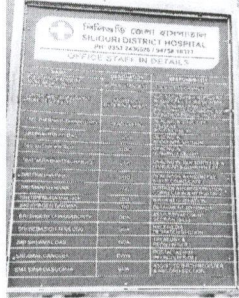
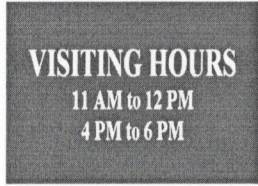


Dated:- 11/12/2019


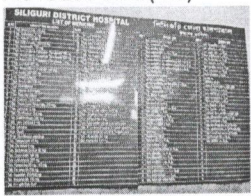
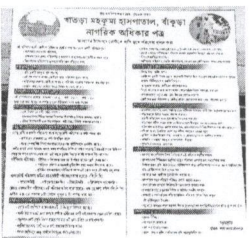

Chief Medical Officer of Health

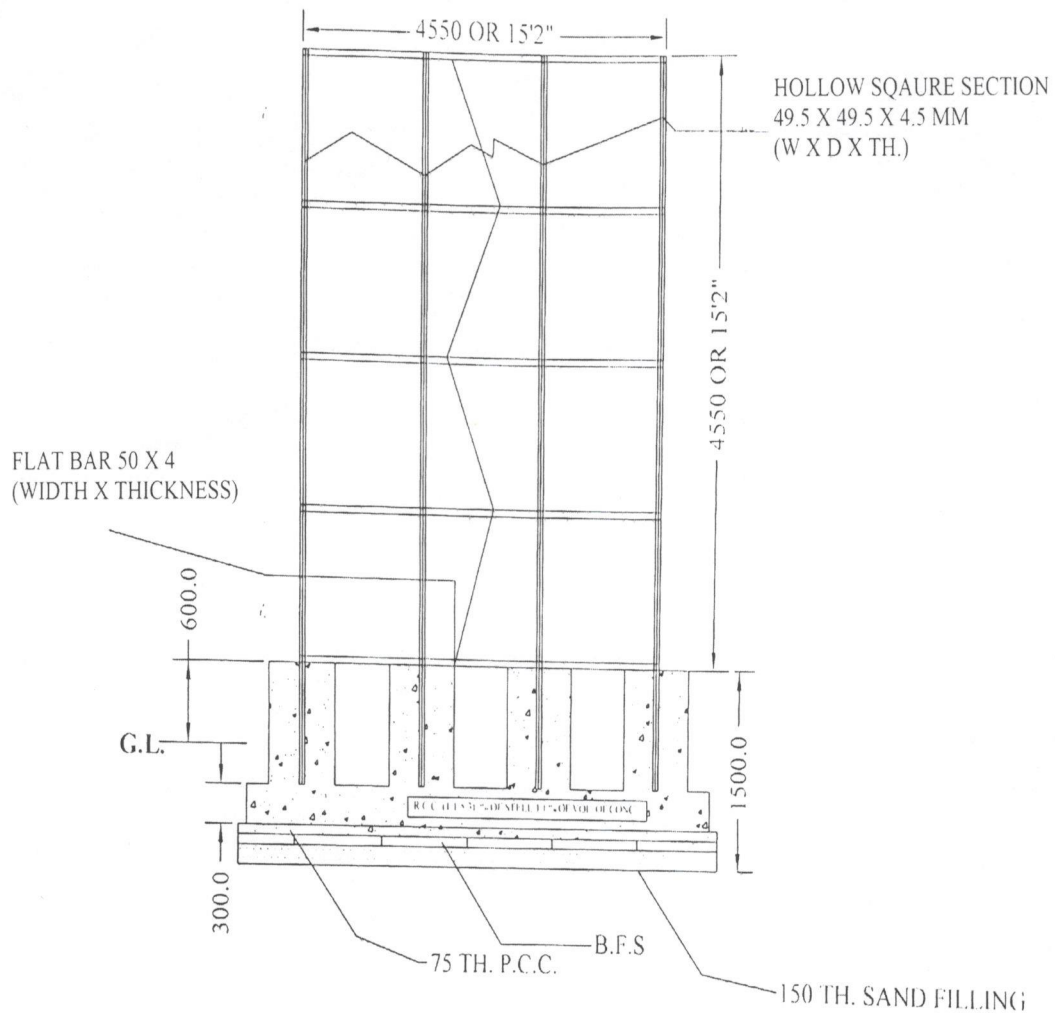
Rampurhat Health District

-: UPDATE SPECIFICATION:-

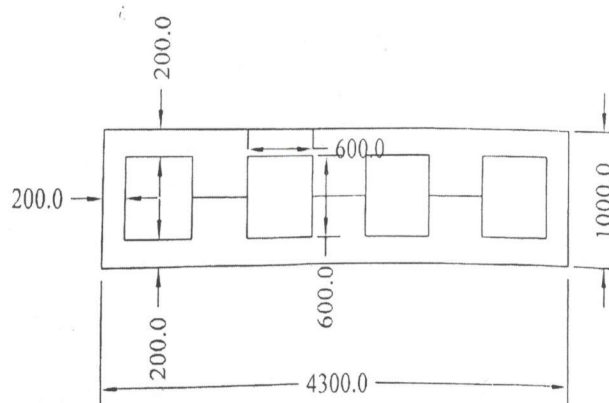
Sl No	Description of signage	Tentative Number of signage boards to be made(May vary as per required)	Minimum size, measured in feet	Material on which signage is to be made	Where to display
1	Hospital lay out plan with location and names of all the departments. (UNIT RATE SHOULD BE IN SQUARE FEET)	One per facility (24) 	8 ft by 6ft OR 48 Sq.Ft. each Eco-solvent print 6 pass	1. Multi colour vinyl (120 micron) pasting on Sun board (12 mm) 2. Structural details as per local need and viability 3. SS STEEL to be used.	At strategic location.
2	Directional signage for entire Hospital. (UNIT RATE SHOULD BE IN SQUARE FEET)	One or two(48) 	6 ft by 4ft OR 24 Sq. ft. each Eco-solvent print 4 pass	1. Multi colour vinyl (120 micron) pasting on Sun board(12 mm) 2. English & Bengali/Local Language. SS STEEL to be used.	At strategic locations
3	Directional signage for each floor. (UNIT RATE SHOULD BE IN SQUARE FEET)	One for each floor(26) 	6ft by 4 ft OR 24Sq. ft. each Eco-solvent print 4 pass	1. Multi colour Vinyl (120 Micron) Pasting on Sun Board (12mm) 2. English, Bengali/Local language	space for such is available, or by the side
4	Demarcation of all rooms of the OPD. (UNIT RATE SHOULD BE IN SQUARE FEET)	As many required(130) 	3ft by 1ft OR 3Sq. ft. Each Eco-solvent print 6 pass	3. Multi colour Vinyl (120 Micron) Pasting on Sun Board (5 mm) both side on hunger (fixed on 3" dia steel round to be fix on wall & 3/4 th inch ss pipe with ending top as per pic. 1. English, Bengali/Local language.	As per position of OPD Room Both sided displayed

					
5	Schedule of OPD (UNIT RATE SHOULD BE IN SQUARE FEET)	One per facility (24) 	10 ft x 8ft or 80 sq. ft Eco-solvent print 6 pass	1. Multi colour vinyl (120 micron) pasting on Sun board(12 mm) 2. Fixing on open area Picture as item no. 3	This board is to be displayed prominently in front of OPD Entrance
6	Visiting Hours (UNIT RATE SHOULD BE IN SQUARE FEET)	As many required(24) 	3 ft by 2 ft Eco-solvent print 6 pass	1. Multi colour vinyl (120 micron) pasting on Sun board(5 mm) 2. Fixing on wall the signage.	To be displayed at main entry to Hospital or at strategic points in Hospital
7	Fire safety instructions (RACE and PASS) (UNIT RATE SHOULD BE IN SQUARE FEET)	As many required(84) 	3 ft by 2 ft Eco-solvent print 6 pass	1. Multi colour vinyl (120 micron) pasting on Sun board(5 mm) 2. Fixing on wall the signage. 3. English, Bengali/Local language.	Near lifts or prominent areas of floors
8	Restricted Entry or No Entry. (UNIT RATE SHOULD BE IN SQUARE FEET)	As many required(48) 	2 ft by 1 ft Eco-solvent print 6 pass	1. Multi colour vinyl (120 micron) pasting on Sun board(5 mm) 2. Fixing on wall the signage. 3. English, Bengali/Local language	Emergency, Labour room OT, CCU, SNCU
9	Hand washing posters (six steps) at all points of hand washing. (UNIT RATE SHOULD BE IN SQUARE FEET)	As many required in all Hand washing areas(96)	2 ft by 2ft. Eco-solvent print 6 pass	1. Vinyl (120 micron) Posters in the form of stickers (washable) are to be made. 2. Matter to be written in English only.	All hand washing areas at eye level.

					
10	List of medicines available in the Hospital (usually) (UNIT RATE SHOULD BE IN SQUARE FEET)	At least two(40) 	10ft by 8ft. Eco-solvent print 6 pass	1. Multi colour vinyl (120 micron) pasting on Sun board(8 mm) 2. Fixing on wall 3. English, Bengali/Local language	OPD, IPD
11	Citizen's charter. (UNIT RATE SHOULD BE IN SQUARE FEET)	One at the main Entrance(24) 	15ft by 15 ft Solvent print	1. Flex of good quality. Matter to be written in Bengali/ Local language(a guideline given alongwith) SS STEEL to be used.	To be displayed prominently at the main gate.
12	SUSHREE (KAYAKALP) display. (UNIT RATE SHOULD BE IN SQUARE FEET)	One at the main Entrance(24) 	6 ft by 4ft or 24sq. ft Eco-solvent print 6 pass	1. Multi colour vinyl (120 micron) pasting on Sun board (8 mm) 2. Fixing on wall 3. English, Bengali/Local language	To be displayed prominently at the main gate.



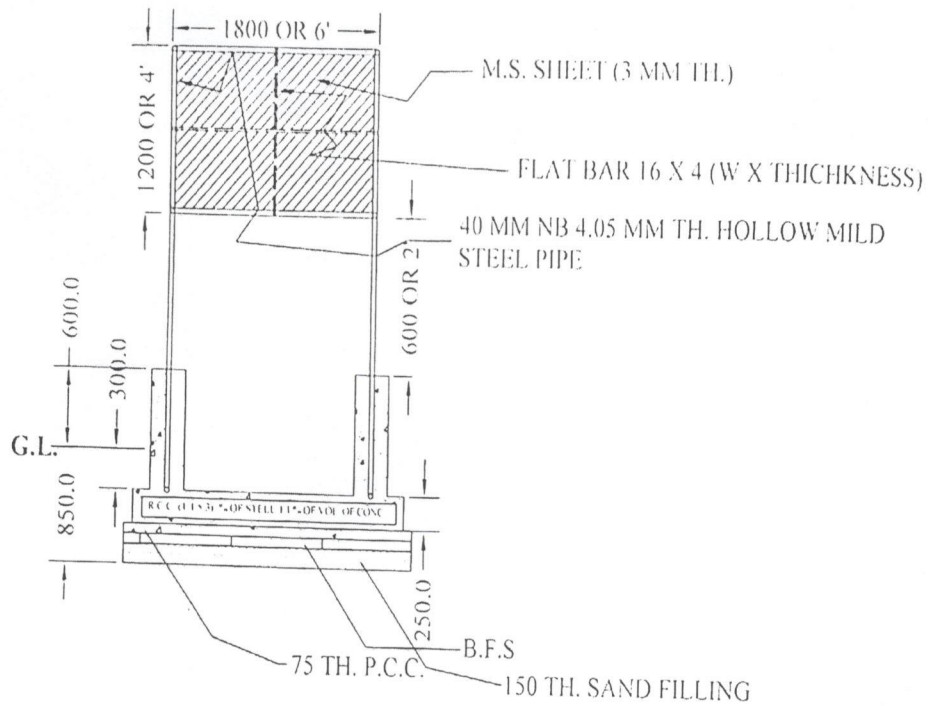
ELEVATION



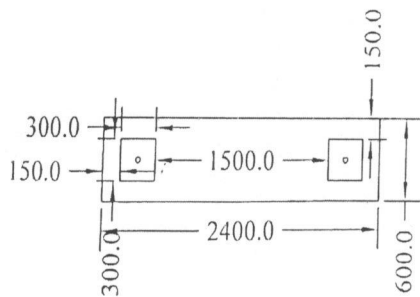
NOTE: ALL
DIMENSIONS ARE IN
"MM" OTHERWISE
STATED.

FOUNDATION PLAN

CITIZEN CHARTER STRUCTURAL DETAILS



ELEVATION



FOUNDATION PLAN

NOTE: ALL
DIMENSIONS ARE IN
"MM" OTHERWISE
STATED.

**STRUCTURAL DETAILS OF
DIRECTIONAL SIGNAGE/ SUSHREE(KAYAKALP) BOARD**